

# Ku-Band Near Field Probe

12.4 to 18 GHz, WR62

## DESCRIPTION

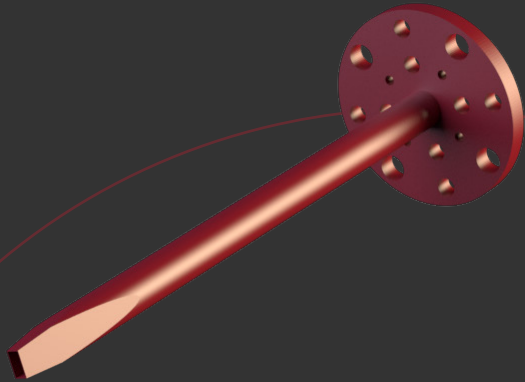
The NFP-150-WR62 is a high-performance open-ended waveguide probe that operates at the Ku-band between 12.4 and 18 GHz. It is manufactured from a single aluminium rod by high accurate manufacturing processes. The opening is sharp to reduce/minimize reflections.

All NFPs can include adequate absorber material to reduce backscattering reflections from flanges.

## APPLICATIONS

This type of horns is especially suitable for laboratory test measurements, electromagnetic measurements and gain calibration. Moreover, custom bands and gain values can be requested.

Anteral also offers their **CATR** (Compact Antennas Test Range) for measuring large antennas at significant short ranges in antenna test facilities.



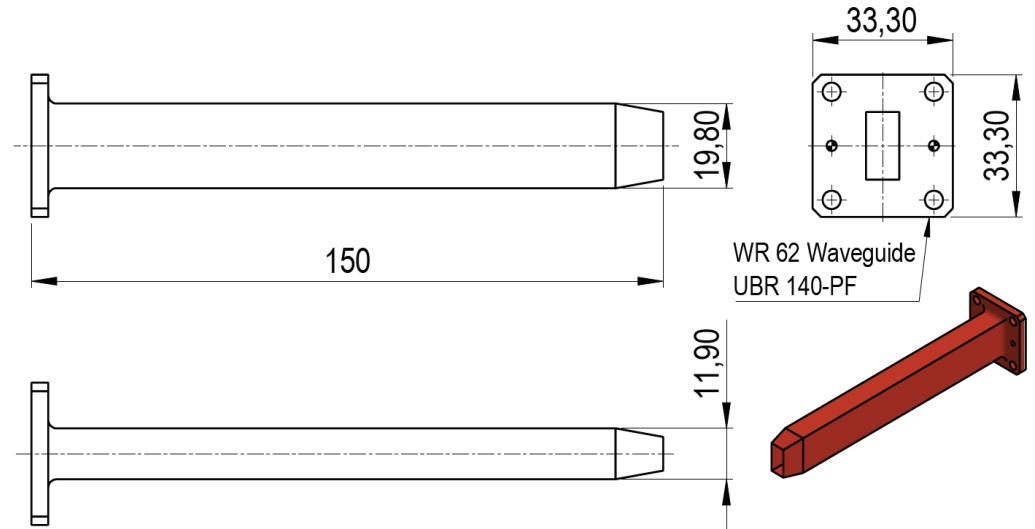
### ELECTRICAL SPECIFICATIONS

| Parameter | Minimum  | Typical  | Maximum |
|-----------|----------|----------|---------|
| Frequency | 12.4 GHz | 15.2 GHz | 18 GHz  |
| Gain      |          | 7.5 dBi  |         |
| S11       |          | -13 dB   |         |

### MECHANICAL SPECIFICATIONS

| Parameter     | Description                  |
|---------------|------------------------------|
| Antenna Port  | WR-62 (15.799 mm x 7.899 mm) |
| Flange        | UG-419/U -PF (UBR 140 -PF)   |
| Total length  | 150 mm                       |
| Horn Material | Aluminum                     |

### MECHANICAL OUTLINE



### Additional notes

The return loss performance of all items is checked before delivery.